



**HARRIS**  
School Solutions 

---

*ClassMate*  
*Teacher Web*

Release Notes  
for April 2017 Release

Release Date: 5/13/2017  
Document Version Date: 5/15/2017

## Resolved Issues

### Defect Corrections

The following reported issues are corrected in this release.

Jira Number	Summary	Notes
CMW-130	Add an Activity "Assigned / Not Graded" filter to the Knowledge grid.	See details below
CMW-150	Allow teachers to set preferred pivot orientation and Student Enroll Status values so it doesn't have to be switched each time they login	Previously, the gradebook would always default to displaying students across the top and if teachers instead wanted to see students displayed along the left-hand column they had to click the blue "pivot" button each time they went into the gradebook. Now a teacher's gradebook pivot preference will be stored so that the teacher does not need to reselect the pivot option. Likewise, the teacher selected value of the "Status" field will also be saved so that if a teacher chooses to view "All" students instead of just "Active" students the system will store that teacher's preference and it will not reset to the default the next time they login. These teacher preferences are class specific therefore the teacher can select a different preference for each class.
CMW-225	CLONE - Add Midterm and Final grade columns on the grade overview screen.	When a teacher clicks on the "Final Grade" button within the Marking Period formula the grades for the Midterm exam and Final Exam will display if these components are included in the final grade formula for that class.
CMW-273	Change Password doesn't work	The top-right "gear" icon, which allows a user to change her/his password, had been non-functional in the previous release. Teachers are now able to change their passwords once again using this button.

Jira Number	Summary	Notes
CMW-274	Enter grade change records into the new Grade Change audit table when activity grades are changed for a MP that has been closed	See details below
CMW-289	Pivot button non-functional on Knowledge grade grid when calculating by Total Points	The blue “pivot” button, which changes the orientation of the students’ names, has been non-functional since the last release but has now been fixed.
CMW-293	Make Discipline code a required field for Discipline Incidents.	Previously, the system was allowing a teacher to create a discipline referral without selecting a Discipline Incident type. An Incident Type is now required in order to create a new discipline referral to avoid the problem of undefined referral records being created.
CMW-295	Create a toggle configuration to allow teacher to override attendance conditions set by admin side	Previously, Teacher Web was NOT allowing a teacher to enter or edit the attendance status of a student if admin personnel had already entered a specific attendance condition on the admin/windows side. An option has been added which allows a school to choose whether or not a teacher is allowed to override an attendance condition that was entered by the admin office. In a future release of the Citrix/Window application (admin side) a configuration field will be available under <b>ClassMate Custom Control &gt; Attendance</b> so that system administrators can make this choice directly. For the time being, this configuration option must be set via a backend script that is applied by the Harris Support staff. If a client wishes to change the default mode and allow teachers to update attendance conditions entered by the admin office they should contact the help desk so that the Harris staff can make this configuration adjustment as needed.
CMW-298	Automatically add a leading zero to single digit skill scores to match Windows functionality	See details below

<b>Jira Number</b>	<b>Summary</b>	<b>Notes</b>
CMW-328	MP Grades are not aligning w/correct MP	On the "Grades" tab of the Student Snapshot screen the marking period grades (term grade) were displaying under the wrong Marking Period header in certain situations. For example, a student's making period 2 grade might have displayed under the MP1 column. Now marking period grades will display under the correct heading even if grades are missing for a certain marking (grading) period.

# New Features

## New Application Features

The following new features have been added to Teacher Web in this release.

### 1. CMW- 130 Activity Filter to hide assignments from non-current marking periods

Several customers have requested the ability to filter the Knowledge grid so that it only shows those activities that apply to the current Marking Period. A new filter has been added to the top of the Knowledge screen which allows teachers to decide which activities will display based on their assigned "color" status. Therefore, it is now possible for a teacher to hide all the activities that have not yet been assigned (gray activities) or show only those activities that are assigned but not yet graded (yellow activities).

The new filter uses the 4 previously existing statuses from the legend:

- Graded (green)
- Not Graded (yellow)
- Not Assigned (gray)
- Not assigned in Selected GP (purple)

For example:

- If a teacher only wants to see activities that count toward the current marking period they can selected the green and yellow filter options.
- If a teacher only wants to see ungraded activities that count toward the current marking period they would select just the yellow filter option.

**Please Note** - The status of an assignment can be different for each student. For example, Activity A could be assigned & ungraded for 3 students (yellow) but still unassigned (gray) for the rest of the students in the class. Therefore, the filter will display an assignment if ANY student in the roster has a color status that matches the color categories that are selected in the filter. (For example, if a teacher selects only to see "Graded" activities (green) than any activities that is graded for **even one student** will display even if all other students are unassigned (gray) for that activity.

AM —Welding Technology 17 Students Status: Active Search: [ ]

ALL 40% Homework Assignment + 60% Quiz = Knowledge Grade

Sort By: Activity Id

Filter Legend: All (blue), Graded ✓ (green), Not Graded ✓ (yellow), Not Assigned (gray), Not Assigned in Selected GP ✓ (purple)

ACTIVITY ID	ACTIVITY NAME	MAX POINTS	AKIAN JACOB	AKIAN COLLIN	BURSON JACOB	COOPER CORY	COOPER MICHAEL	DANKE ZANE	DANKE TALIA	GARFIELD RICHARD	HEARD KEVIN	JARVIS TRENT
			KNW :	KNW : 50	KNW :	KNW : 75	KNW :	KNW :	KNW :	KNW :	KNW :	KNW :
			GRADE	GRADE	GRADE	GRADE	GRADE	GRADE	GRADE	GRADE	GRADE	GRADE
000001	Bell Ringer - Ruler Dimensions	4	2	2		3		4	4	4		
10-140	General Safety Quiz	20	15	20	20	17	15	19	20	20	20	20

## 2. CMW-274 Grade Change Alert on admin side

A new alert box has been added to the admin (window) side of ClassMate. This new alert is triggered by changes to the Knowledge activities that occur on Teacher Web which affect a closed marking period. This new alert will inform admin staff when a change has been made to a Knowledge activity which may require a recalculation of a marking period grade.

On teacher web it is possible for a teacher to change the "Date Taken" of a particular activity. Changing the activity date may result in the activity applying to a different marking period which may require a recalculation of the marking period (quarter) grade.

### Teachers receive a warning message when a change may affect the MP grade for a closed Marking Period. (Previously Available)

The screenshot displays the ClassMate interface with a warning dialog box and an 'Update Knowledge Activity' form overlaid on a table of activities.

**Warning Dialog Box:**

Warning

You're updating the Date Graded to a different Grading Period. If you make this change the Knowledge Gradebook average may no longer equal the Knowledge grade that was submitted when the Grading Period was closed for Grading Period 2 . Do you wish to continue?

No Yes

**Update Knowledge Activity Form:**

Assigned Date: 11/02/2016

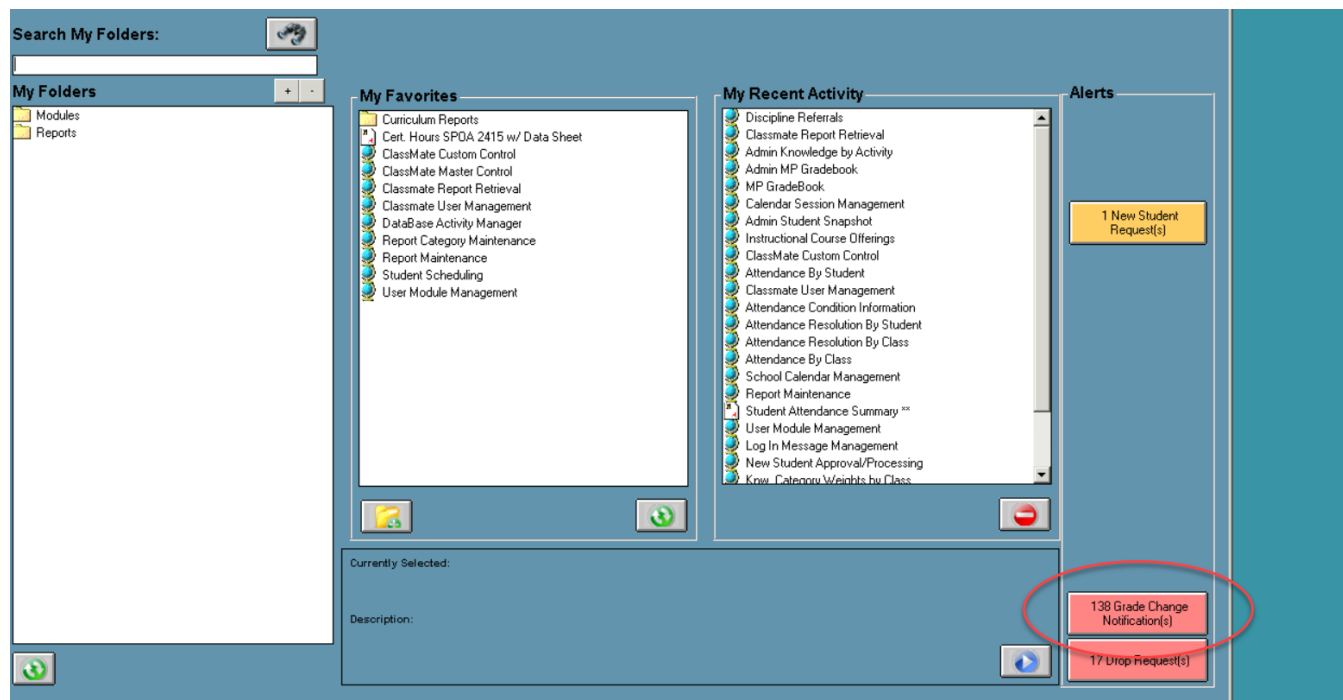
Date Taken: 03/15/2017

REQ: T

**Background Table:**

ID	Activity Name	Points	Grade
000001	Be Rule		
HW0101	H c as		
HW110	He Rel #17033		
HW115	HeathersTest2	50	25
HW120	Heathers Test Homework Activity	100	95

**Admin Staff now see teacher grade changes in the "Grade Change Notification" alert (New!)**



### 3. CMW-298 Leading zeros for Skill scores

Tasks within the Skill grid are scored using a rubric score. The possible rubric score values will differ among clients but typically the possible scores are values between 0 and 4 or values between 0 and 10. When skill scores are entered on the windows side (as opposed to the Teacher Web interface) a leading zero would display so that a score of "2" would actually display as "02".

Previously, scores entered from the Teacher Web would NOT display a leading zero which led to inconsistency on certain Skill reports and Skill summary screens.

In order to align the skill scores to a consistent style, a leading zero will be added to any single digit skill score that is greater than zero. Therefore, when a teacher enters a score of "3" a leading zero will be automatically appended so that the value of "03" will be displayed and be stored in the database.

Please note that this new rule does NOT apply to the score of "0" since we must distinguish this from a score value "00" which carries a special significance.

- A score of "00" indicates: the skill was NOT YET assessed
- A score of "0" indicates: the skill was assessed and the student received the LOWEST possible score

	AKIAN CAITLYN	BURSON AMANDA	BURSON ANORA	BURSON CONNOR	BURSON SARAH	COOPER ALYSSA	COOPER EMILEE	COOPER JASAYDI	DANKE SHANNON	DANKE YESMEIL
	SKL :	SKL :	SKL :	SKL :	SKL :	SKL : 40	SKL : 50	SKL :	SKL :	SKL :
TITLE	GRADE	GRADE	GRADE	GRADE	GRADE	GRADE	GRADE	GRADE	GRADE	GRADE
Keeps all tools in school and in a clean and orderly condition I	00	08	05	00	0	04	05	00	00	00
Keeps all tools in school and in a clean and orderly condition II	10	10	10	10	10	10	10	10	10	10
Keeps all tools in school and in a clean and orderly condition III	00	00	08	09	00	00	00	00	00	00



# Upcoming Features

## Future improvements in development for the June thru July 2017 releases

The following items are currently being worked on and are expected to be released in the next 1 to 3 months pending their passing all QA testing.

- Reports
  - Upgrade to a new version of the Crystal Reports web render so that teachers are able to successfully run a wider variety of reports in Teacher Web without errors.
  - Make it so teachers can export a report more easily and efficiently.
  
- Gradebook Grading Grids
  - Allow teachers to save their selections on the activity category filter and the activity assignment filter so they don't have to keep reselecting their preferences each time they login to the gradebook.
  - Create a new column in the Knowledge grid to view a student's grade level or skill year
  - Create a "Final Project" button for those clients that include a final project as a grade component.
  - Hide the "POS" grading field on the Skills grid if a client is not using the POS grading method.
  - Add a filter on the Student Snapshot screen to hide activities or skills that have not yet been scored (i.e. '00' score)
  
- Attendance Screen
  - Create a configuration flag that would allow teachers to mark Suspension and Homebound if the school wants to allow teachers to use these attendance categories.
  - Prevent teachers from entering a '0' as a Work Ethic score if a student was marked Present.
  - Create a "School" column so that teachers can see each student's sending school.
  
- Knowledge Bank
  - Prevent teachers from creating activities for a category that is NOT part of their Knowledge Grading formula when using the WEIGHTED CATEGORIES calculation method.
  - Make it so leading zeros are appended to the value for Activity ID so that Activity ID values entered on Teacher Web are consistent with those values that are entered on the Citrix/"windows" side. (Example: if a teacher enters an activity ID of '350', system will record and display an activity ID of '000350'.)
  
- Miscellaneous Functionality Gaps (Intended Primarily for NY & PA clients)
  - Allow teachers to enter student industry/course certifications.
  - Allow teachers to enter Special Services (Interventions).